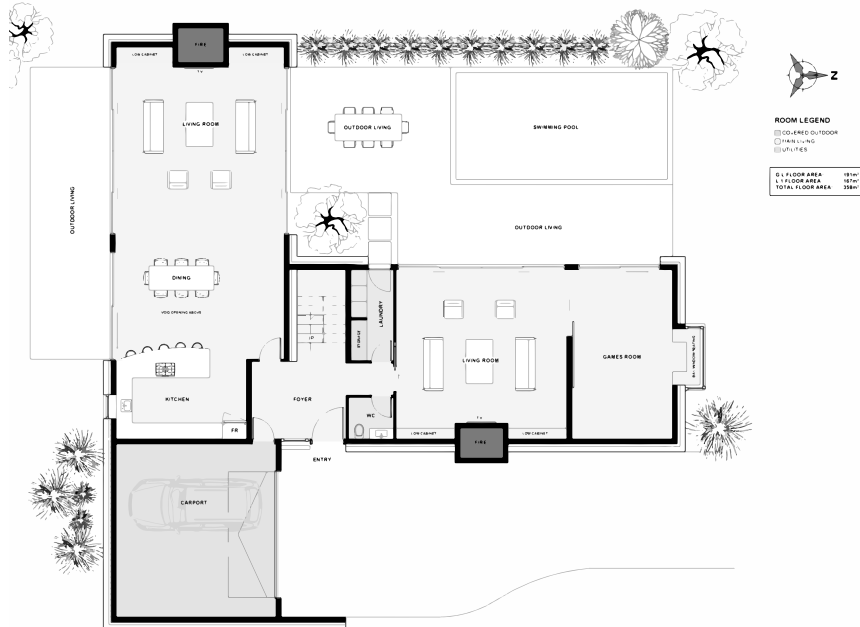




The 'Brighton' is a modernised English manor with luxury sized proportions. Above, the 'Brighton' is finished in orange bricks with a bagged finish, (thin layer of cement render). Fixed wooden louvres bring this home to present day status and increased privacy for the second floor. All living is situated on the ground level while all 4 large bedrooms plus the study are upstairs. Above the dining is a double height ceiling which is overlooked by the open study and walkway which leads you to your large master bedroom.



Floor Area: 358m²

 2
  4
  2
  16.5m
  22.4m

Contact Durham:
 Ph: 022 674 1204
 E: info@mossmanconstruction.co.nz
www.mossmanconstruction.co.nz

