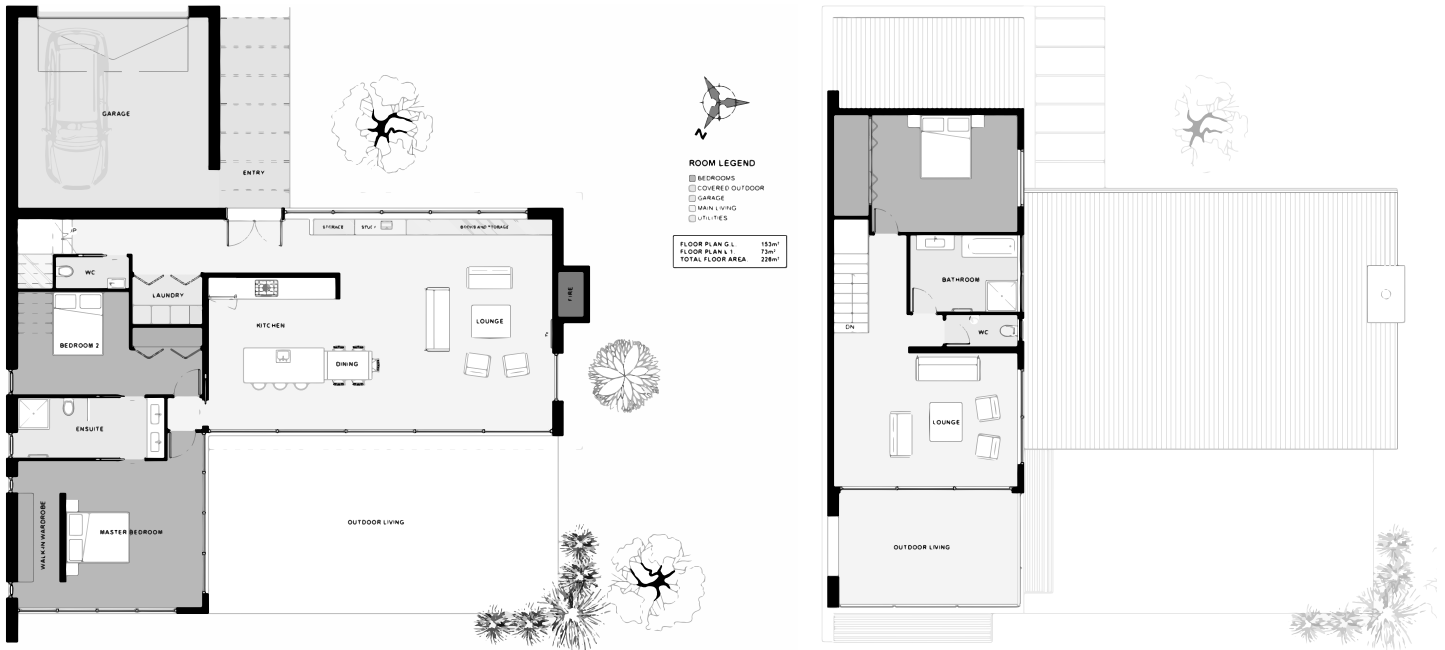




The 'Ettick' is a fun-sized home that is designed to fit most sections. Whether your driveway comes in from the east, south or west this home can work. The dining kitchen and lounge is open plan with the ceiling raking up towards the higher northern windows allowing light to reach deep within the home. The raking ceilings also give the main living area an increased sense of space. The master bedroom includes a very generous ensuite and an open walk-in wardrobe. Overhead, a covered balcony gives those upstairs great views and sunlight right through to the evening.



Floor Area: 226m²

 2
  3
  2
  14.0m
  15.2m

Contact Durham:
 Ph: 022 674 1204
 E: info@mossmanconstruction.co.nz
www.mossmanconstruction.co.nz

